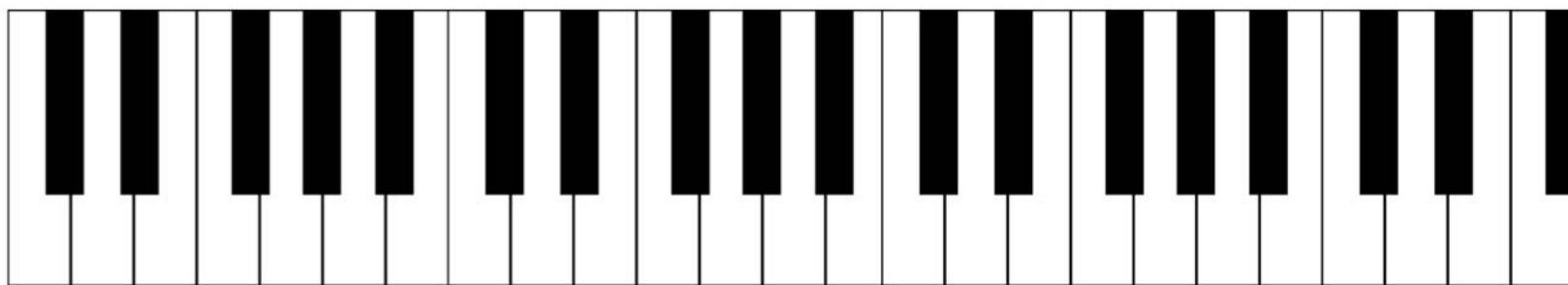
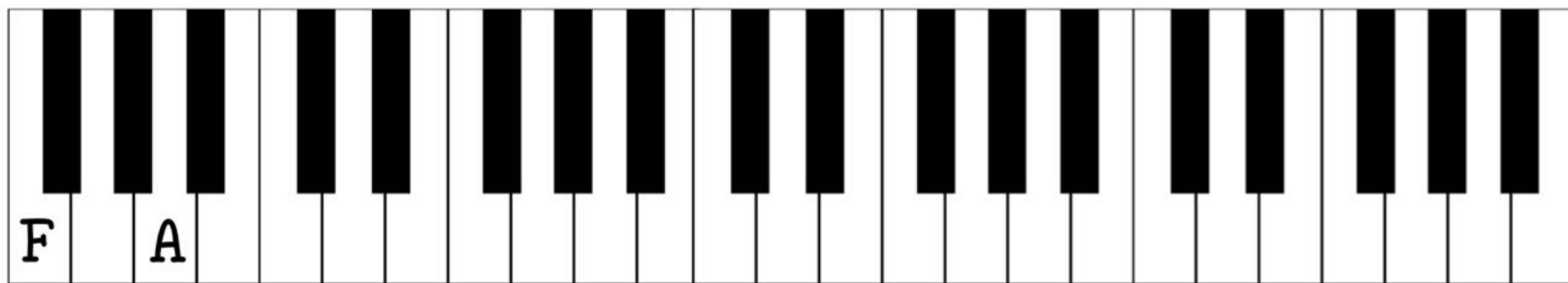


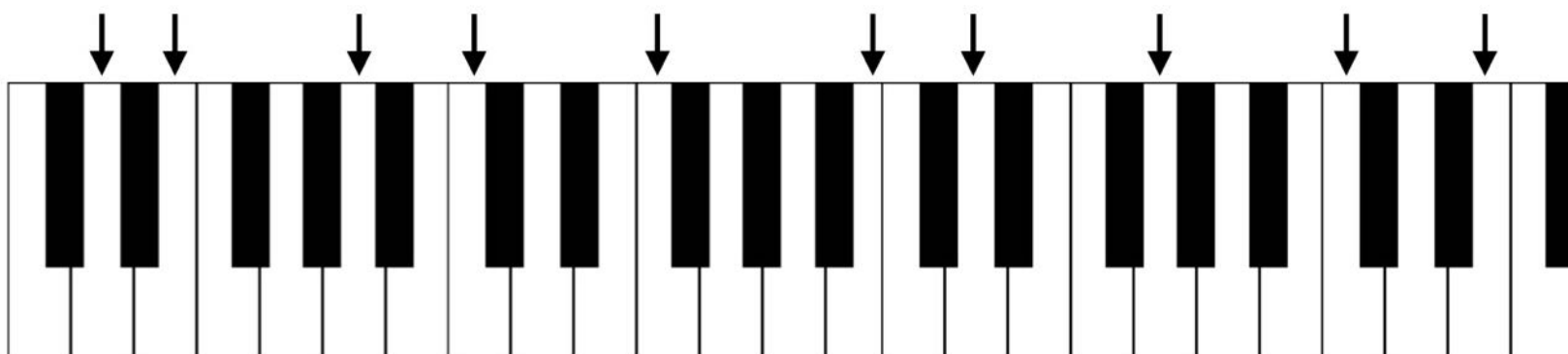
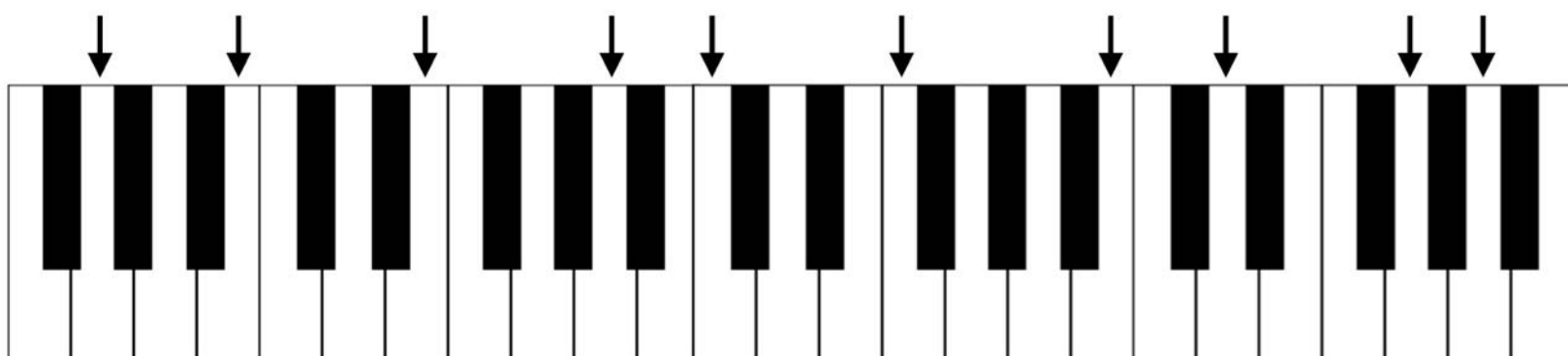
# PIANO KEYS

Name \_\_\_\_\_

In the following examples, write the letter name on every other piano key. An example has been done to show you how.



In the following examples, write the letter name on every key marked with an arrow.

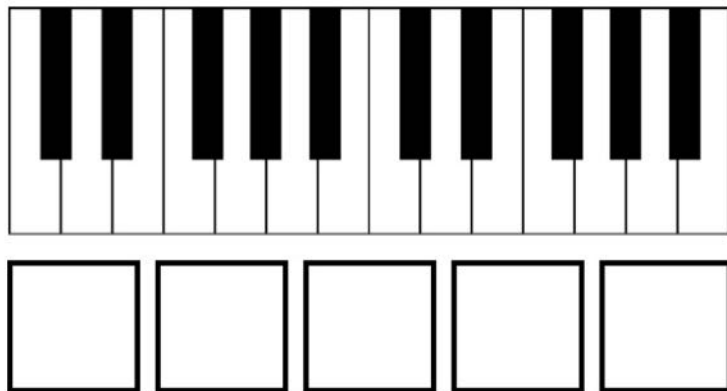


# MAJOR 5-NOTE SCALES

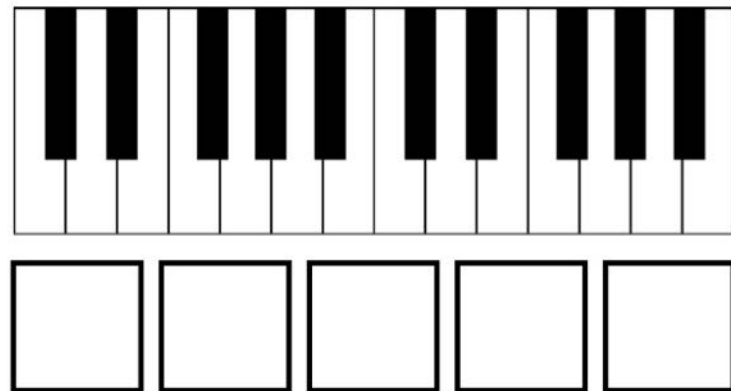
Name \_\_\_\_\_

Write an X on each piano key of the given MAJOR 5-note scale.  
Write the letters of that scale in the boxes. Include accidentals.

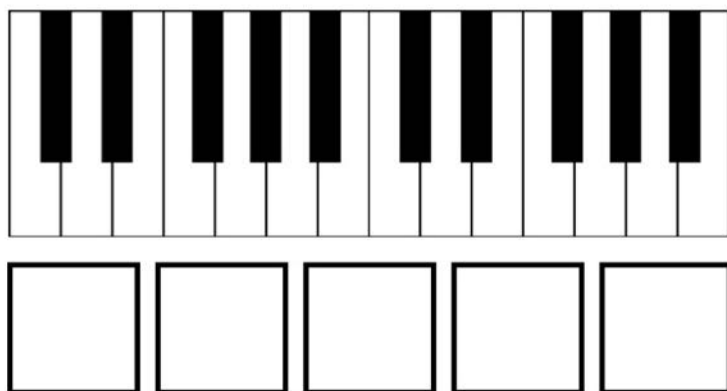
E Major



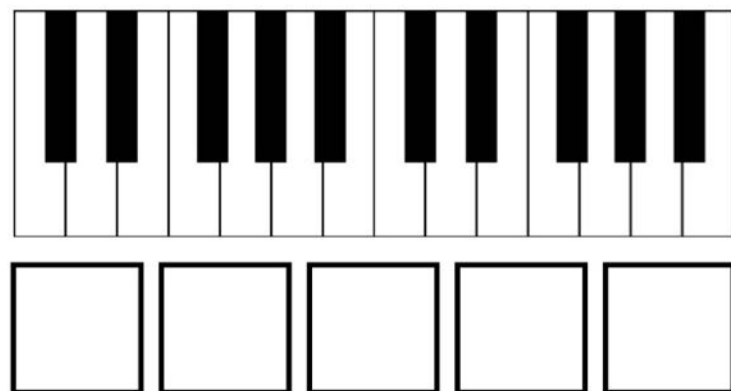
G Major



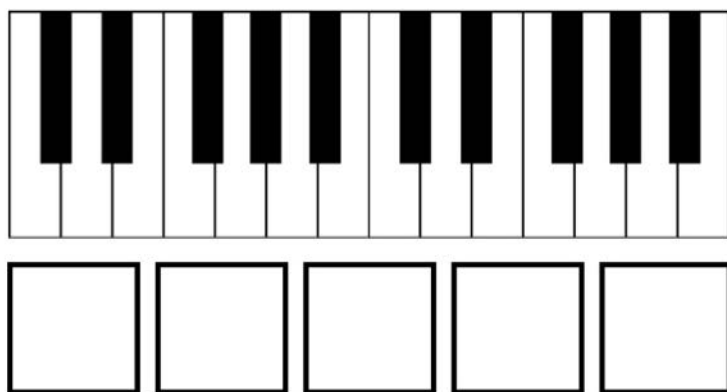
B Major



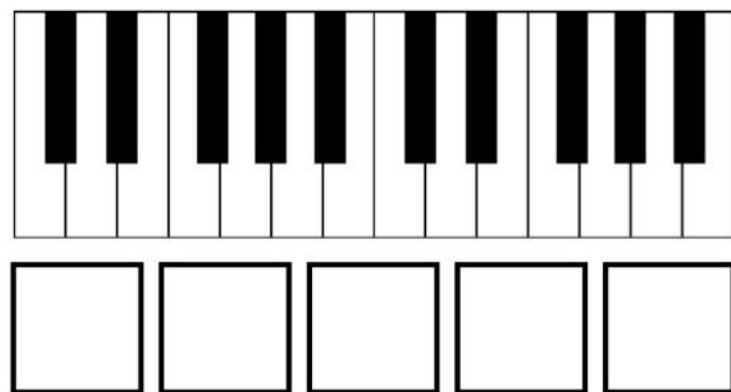
D Major



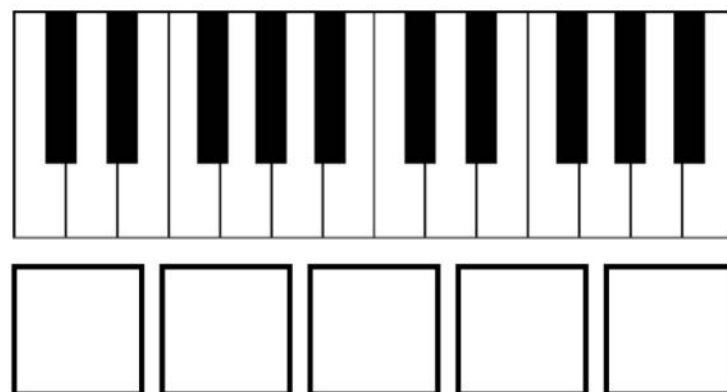
F Major



A Major



C Major



# DRAW THE SYMBOLS

Name \_\_\_\_\_

Draw each musical symbol in the box.

Treble &  
Bass Clef

Double Barline

Measures

Barline

Staff

Sharp

Natural

Flat

Time Signature

# DRAW THE SYMBOLS

Name \_\_\_\_\_

Draw each musical symbol in the box.

Whole Note

Quarter Rest

Half Note

Half Rest

Quarter Note

Eighth Rest

Dotted Half Note

Whole Rest

Eighth Note

*Date:* \_\_\_\_\_

### 3. Complete the following worksheet

## The Staff - Treble Clef

At the beginning of each staff there is a clef. The treble clef (also known as G clef) looks like this:



The treble clef gives establishes a landmark on the note G on the 2nd line of the treble staff.

To draw the treble clef, draw:  
the line and tail



1.

the top loop



2.

the left loop



3.

the right loop



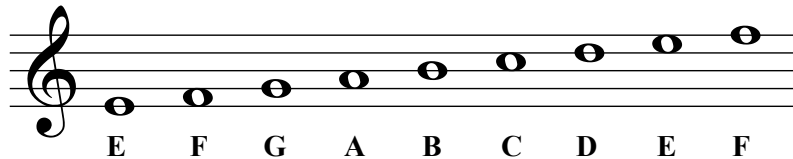
4.

the curl

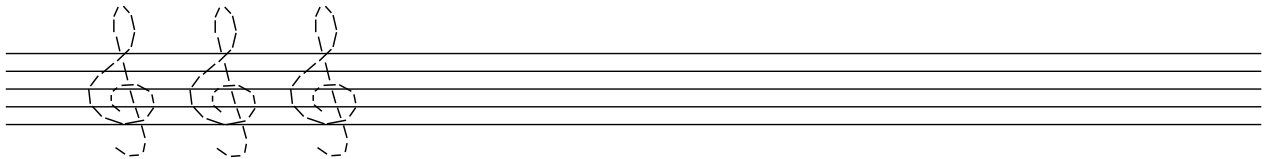


5.

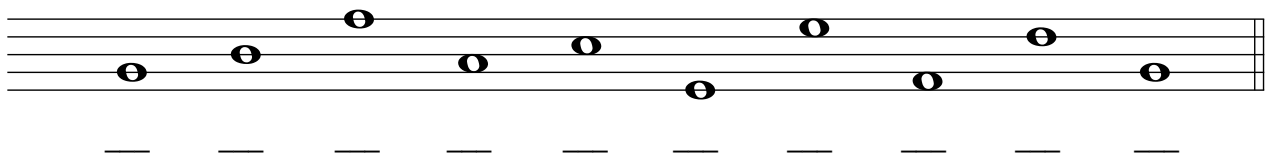
Notes are named after the first seven letters of the alphabet (A through G).



1. Try drawing the treble clef sign by tracing over the dotted lines. Then draw five more of your own.



2. Draw a treble clef at the beginning of the staff. Then write the letter names of each note.



3. Draw a treble clef at the beginning of the staff. Then draw the notes indicated. If a note can be written on more than one place on the staff, choose one.



#### 4. Complete the following worksheet

## The Staff - Bass Clef

The bass clef (also known as F clef) looks like this:



The bass clef gives a landmark on the note F on the 4th line of the bass staff.

To draw the bass clef, draw:  
a black dot



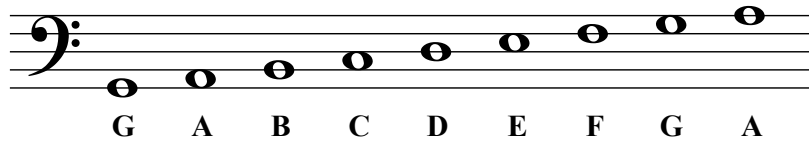
a curve



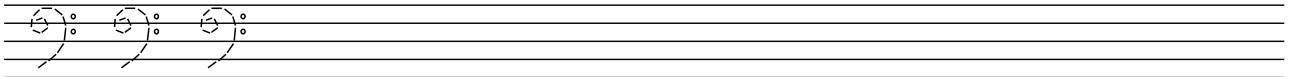
two dots



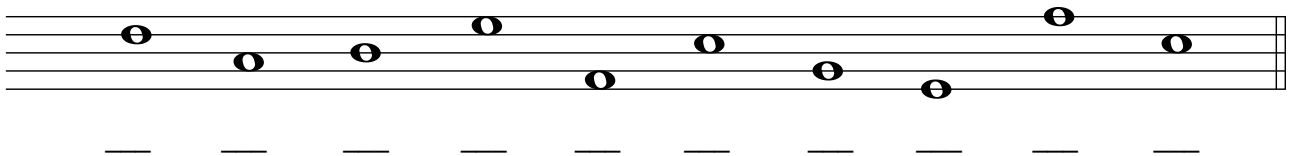
Notes are named after the first seven letters of the alphabet (A through G).



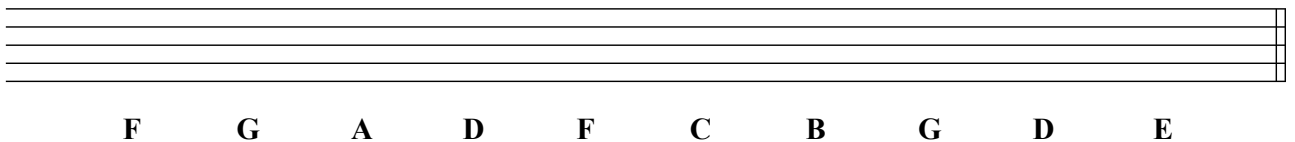
1. Try drawing the bass clef sign by tracing over the dotted lines. Then draw five more of your own.



2. Draw a bass clef at the beginning of the staff. Then write the letter names of each note.



3. Draw a treble clef at the beginning of the staff. Then draw the notes indicated. If a note can be written on more than one place on the staff, choose one.



# MUSIC TERMS

Name \_\_\_\_\_

Define the following terms.

1. Treble Clef
2. Staff
3. Bass Clef
4. Repeat Sign
5. Forte
6. Whole Note
7. Quarter Note
8. Piano
9. Half Note
10. Double Barline
11. Grand Staff
12. Barline



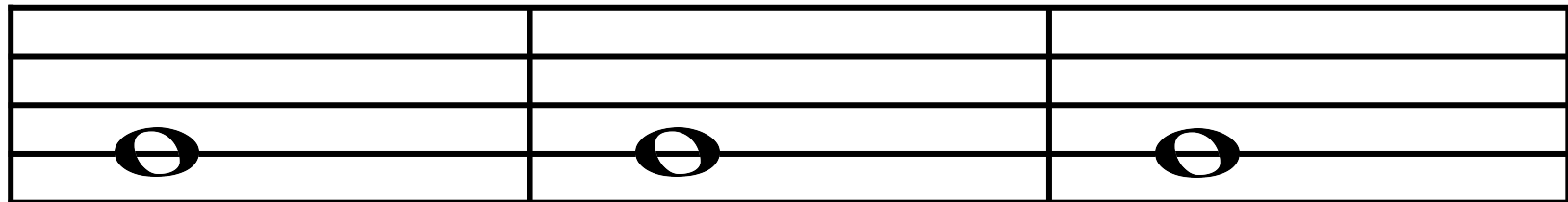
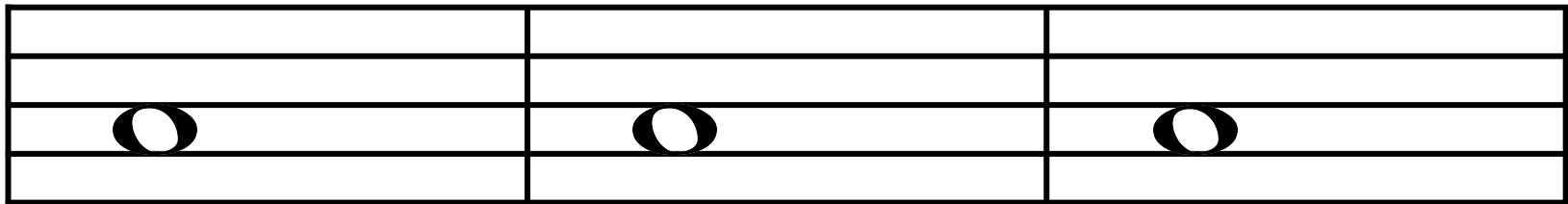
# IDENTIFYING INTERVALS

Directions: Complete each interval by drawing a whole note. Then, identify each note as either a line note or a space note by labeling each with an "L" or an "S".

## UNISONS

## STEPS

## SKIPS



# MUSICAL MATH

Name \_\_\_\_\_

Answer the musical math problems by writing a NUMBER in the box. An example has been done to show you how.

$$\text{half note} - \text{quarter note} = \boxed{2}$$

$$\text{quarter note} - \text{quarter note} = \boxed{\phantom{00}}$$

$$\text{quarter note} - \text{quarter note} = \boxed{\phantom{00}}$$

$$\text{quarter note} - \text{eighth note} = \boxed{\phantom{00}}$$

$$\text{half note} - \text{eighth note} = \boxed{\phantom{00}}$$

$$\text{half note} - \text{quarter note} = \boxed{\phantom{00}}$$

$$\text{quarter note} - \text{quarter note} = \boxed{\phantom{00}}$$

$$\text{quarter note} - \text{eighth note} = \boxed{\phantom{00}}$$

$$\text{eighth note} - \text{eighth note} = \boxed{\phantom{00}}$$

$$\text{half note} - \text{half note} = \boxed{\phantom{00}}$$

$$\text{eighth note} + \text{quarter note} - \text{quarter note} + \text{half note} - \text{half note} + \text{eighth note} = \boxed{\phantom{00}}$$